

**Note:** Dimensions are nominal measurements only

## SPECIFICATIONS

### RECOMMENDED USE | WARRANTY

Domestic/Commercial | [Click here for warranty periods](#)

### CONSTRUCTION

316 Stainless Steel

### TEMPERATURE RATING

Maximum continuous working temperature 75°C  
If the water temperature exceeds 75°C, an approved tempering valve must be fitted

### PRESSURE RATING

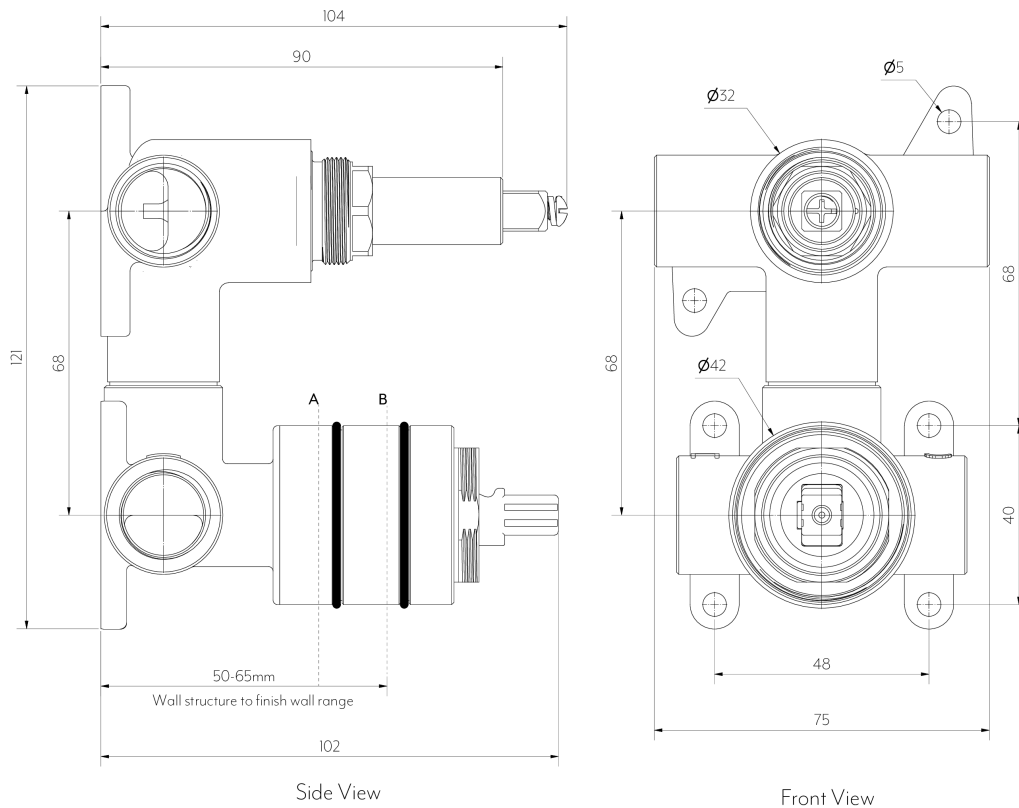
Recommended minimum working pressure 150kPa  
Recommended maximum working pressure 500kPa  
Hot and cold water inlet pressure should be equal

### SUITABLE HOT WATER UNITS

Storage tank: Yes  
Continuous flow: Yes  
Gravity fed: Not suitable

### BOXES IN SET

Box 1 of 3 In-wall Minimal Diverter Mixer Body (Rough-In)  
Box 2 of 3 Aliro Top Diverter Handle Kit (Fit-Off)  
Box 3 of 3 Aliro Minimal Mixer Handle Kit (Fit-Off)



**Note:** Dimensions are nominal measurements only

## SPECIFICATIONS

### RECOMMENDED USE | WARRANTY

Domestic / Commercial | [Click here for warranty periods](#)

### MATERIAL

Stainless Steel 304

### TEMPERATURE RATING

Maximum continuous working temperature 75°C  
If the water temperature exceeds 75°C, an approved tempering valve must be fitted

### PRESSURE RATING

Recommended minimum working pressure 150kPa  
Recommended maximum working pressure 500kPa  
Hot and cold water inlet pressure should be equal

### SUITABLE HOT WATER UNITS

Storage tank: Yes  
Continuous Flow: Yes  
Gravity Feed: Not suitable

# INSTALLATION GUIDE

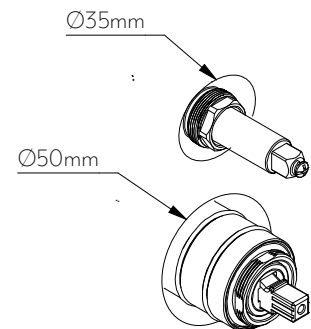
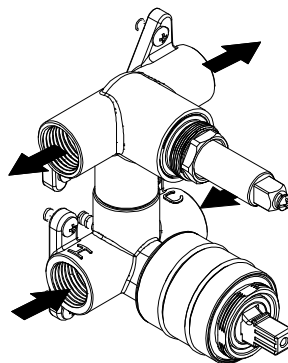
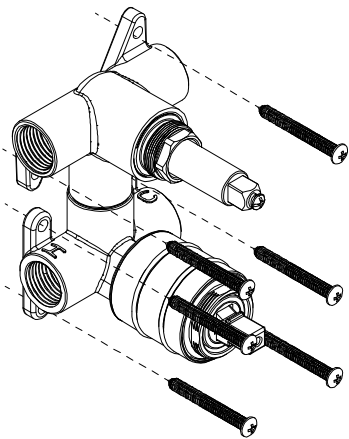
**Note:** This product must be installed by a licensed plumber. This is a general installation guide - there are many factors involved that can alter the installation method. **AU/NZ:** For installations within Australia and New Zealand, this product must be installed in compliance with AS/NZS 3500. **UK:** For installations in the United Kingdom this product must be installed in compliance with the Water Supply (Water Fittings) Regulations and Water Supply (Water Fittings) (Scotland) Byelaws. **Other:** For installations outside these countries, this product must be installed in compliance with the standards in your respective country.



## ROUGH IN

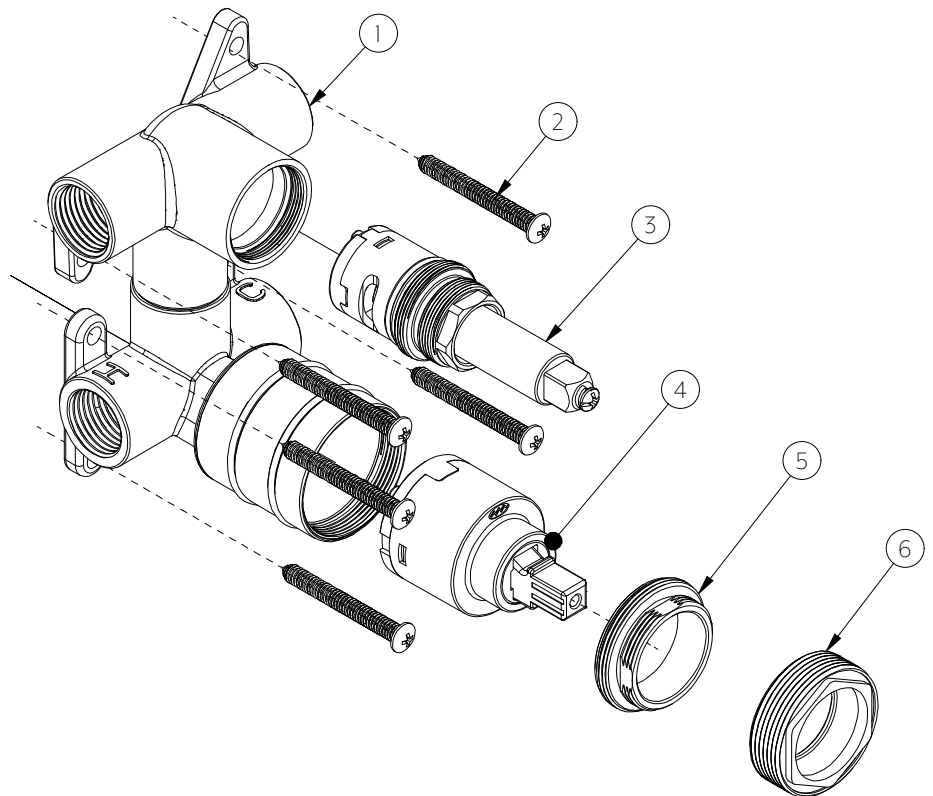
See specification image for finish wall setback

- ① Screw in-wall body into wall structure with provided screws.
- ② **\*NOTE:** Two locking nuts are included in packaging. Please ensure correct one is installed for the chosen range of tapware prior to connecting water supply. Connect hot, cold and both mixed lines. **TEST AND CHECK FOR LEAKS.**
- ③ Sheetting and waterproof layer can now be applied.  
\*Ensure cutout in finish wall is Ø50mm for the mixer handle and Ø35mm for the diverter.



## WHAT'S IN THE BOX

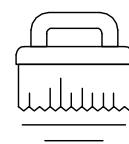
1. Body
2. Fixing screws (x6)
3. Diverter cartridge
4. Mixer cartridge
5. Locking nut (NESSO)
6. Locking nut (SOLA & ALIRO)



Regularly clean with mild liquid detergent or soap and water



DO NOT use cream cleaners or bleach. These substances are abrasive



DO NOT use cleaning pads with abrasive surfaces as this may scratch the material

# INSTALLATION GUIDE

**Note:** This product must be installed by a licensed plumber. This is a general installation guide - there are many factors involved that can alter the installation method. **AU/NZ:** For installations within Australia and New Zealand, this product must be installed in compliance with AS/NZS 3500. **UK:** For installations in the United Kingdom this product must be installed in compliance with the Water Supply (Water Fittings) Regulations and Water Supply (Water Fittings) (Scotland) Byelaws. **Other:** For installations outside these countries, this product must be installed in compliance with the standards in your respective country.



## FIT OFF INSTALLATION GUIDE

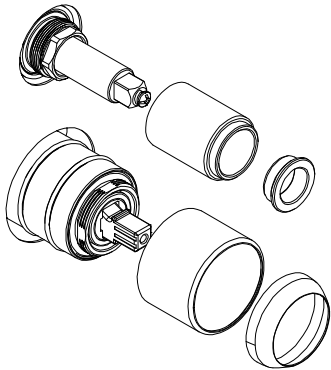
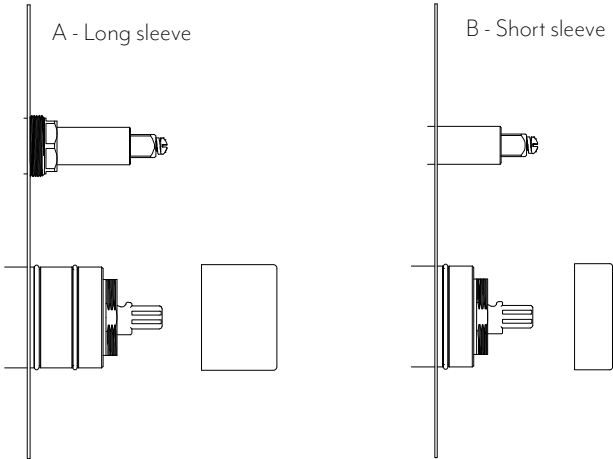
**NOTE:** See 'In-wall minimal diverter body - ss304' installation guide for in-wall set out.

- 1

Choose mixer sleeve based on how far your in-wall body protrudes from finish wall.
- 2

1. Screw on diverter sleeve and insert plastic collar.

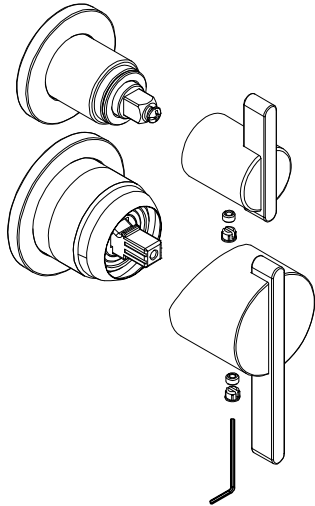
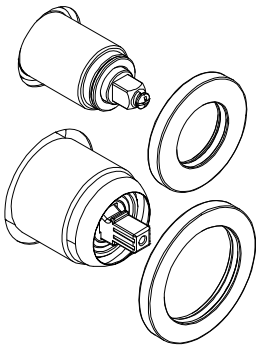
2. Slide on mixer sleeve and screw dome on to secure.



- 3

Slide backplate over both sleeves ensuring not to scratch.
- 4

Install both handles by tightening grub screws with provided allen key and inserting grub screw covers.



IN THE BOX (Diverter Handle Kit)			
1x Diverter handle		1x Diverter sleeve	
1x Grub screw cover		1x Plastic collar	
1x Allen key		1x Backplate	

IN THE BOX (Minimal Handle Kit)			
1x Minimal handle		1x Minimal long sleeve	
1x Grub screw cover		1x Minimal short sleeve	
1x Allen key		1x Backplate	

Regularly clean with mild liquid detergent or soap and water

DO NOT use cream cleaners or bleach. These substances are abrasive

DO NOT use cleaning pads with abrasive surfaces as this may scratch the material